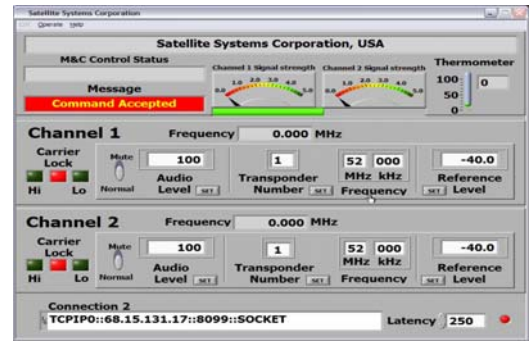




Satellite Systems Corporation
 101 Malibu Drive Virginia Beach, VA 23452 USA
 Voice (757) 463-3553 FAX (757) 463-3891
info@satsyscorp.com

Model 1102-L FM SCPC DEMODULATOR Dual Channel

*Reliable products for commercial and
 government satellite communications
 since 1980*



The Satellite Systems Model 1102 is a dual channel SCPC (Single Channel Per Carrier) Analog FM demodulator which is frequency agile over a 1210 MHz band from 940 MHz to 2150 MHz. Each channel of the 1102 can independently select any frequency within this range on 10 kHz steps. Frequency selection, Audio level, Audio muting, and RF Level adjustments for each channel are made via front panel keypad and display or Remote Control via the user selected RS-232 / RS-485/422 / or Ethernet.

CHANNELS	2 independently controlled
INPUT FREQUENCY	940 - 2150 MHz
INPUT LEVEL	-40 to -95 dBm
MODULATION	Analog FM
CARRIER SELECTION	10 kHz Steps
NOISE BANDWIDTH	200 kHz
COMPANDING	2:1, single band, CCITT
EMPHASIS	CCITT
AUDIO OUTPUT (nominal)	+9 dBm Max @ ± 75 kHz deviation 0 dBm Max @ ± 44.7 kHz deviation @ (600 ohms Bal.)
	Front Panel and Remote control Adjustable
FREQUENCY RESPONSE	± 1 dB Maximum
AUDIO RESPONSE	30 Hz to 15 kHz
INPUT CONNECTOR	Type N Female
LNB POWER	+20 VDC Present on Input Connector Center Conductor (300ma max)
THD	≤ 1 % @ 1 kHz
C/No	68 dB.Hz, operational 64 dB.Hz, threshold, Impulse noise @ one click per second.
SIGNAL TO NOISE	>75dB @ ± 75 kHz deviation
AC POWER	90 - 260 VAC @ 47 - 63 Hz
OPERATING TEMPERATURE	+10 to +50 deg. C
HUMIDITY	<95% @ +50 deg. C
MOUNTING	Standard 19" Rack Mount
SIZE	1 RU, 18.75" deep
WEIGHT	7.5 pounds
REMOTE CONTROL RS-232, RS-485/422, Ethernet are all supported and are front panel selectable	