



Satellite Systems Corporation
 101 Malibu Drive Virginia Beach, VA 23452 USA
 Voice (757) 463-3553 FAX (757) 463-3891
info@satsyscorp.com

Model 3434-IF

L-Band Beacon Tracking Receiver

Version 4

A tracking receiver for antenna step tracking and automatic uplink power control with Accu-trac for high frequency drift applications.

The Model 3434-IF Version 4 is the latest release of our reliable series of 3434 Beacon Receivers. The Model 3434-IF features an input of **50-200 MHz**, Digital Level reference setting, Ethernet connectivity with M&C control interface, and power up temperature compensation for rapid signal acquisition. The 3434 series now offers our proprietary Accu-trac search and acquire AFC feature with several search bandwidths up to ± 800 kHz. Frequency selection on 10 kHz steps may be accomplished from the front panel or via remote control. Pre-detection noise bandwidth of 50 kHz (or factory option of 25 kHz) facilitates accurate tracking at very low C/N levels for use with either CW or BPSK carriers.

- ★ AFC disable option for wide data carrier applications
- ★ Digital level reference setting, -10 to -70 dBm on 0.5 dB steps
- ★ BPSK Modulation compatible
- ★ Accu-trac signal tracking feature for high frequency drift applications with selectable acquisition bandwidths up to ± 800 kHz
- ★ RS-232/422/485 and Ethernet, control interface, all Standard
- ★ Dual signal strength output / 2 identical analog outputs for simultaneous antenna tracking and UPC control

The output of the Beacon Receiver is a DC voltage proportional to the input signal level to facilitate both antenna tracking control and automatic power control. A Loss of Carrier indicator is provided in the event the tracking signal is lost. Form "C" relay contacts provide an external Loss of Carrier Alarm. A front panel VFD or SSC GUI (via your computer) displays operating frequency, relative signal level, carrier lock or alarm, and input level.

Specifications

Input Frequency	50-200 MHz
Input Level	-10 to -70 dBm typical
Level Adjust	Digital, 0.5 dB steps
Level Accuracy	± 0.4 dB per step
 ± 4 dB over entire range
Tracking Slope	0.5 V/dB
Tracking Linearity	± 0.25 dB
Frequency Selection	10 kHz steps
Min. input level for Lock	-85 dBm
Input Connector	Type "BNC" Female, 50 ohm*
Threshold	4 dB C/N for acquisition
	< 1 dB C/N for carrier lock
Tracking Response	0 to +10 VDC over 20 dB input range standard
	other ranges optional****
Alarms	Form-C relay contacts
AFC	± 25 kHz**
AFC disable	For Wide data carrier applications
Accu-trac sweep widths	disable & user selectable bandwidths from ± 50 kHz to ± 800 kHz
Noise Bandwidth	50 kHz
Modulation type	CW or BPSK up to 8kbps
Output – dual signal strength analog output	Modular socket & plug
M&C	RS-232 or RS-422/485
	Ethernet 10/100 Base T
..... Continuous Data Streaming option/ streaming signal strength output via a dedicated RS-232 DB 9 connector	
M&C Connector	DB-9 Female & RJ 45 Connector
	Dedicated DB9 with CDS option
MECHANICAL:	
Output Connector	Modular socket & plug
Dimensions	1 RU, 19" x 16" x 1.75"
POWER:	
Prime Input Power	90-260 VAC, 47-63 Hz, auto-sensing, 45 Watts max
LNB Power	+24 Volts @ 1 Amp available on center conductor Selectable In/Out****

* Other input connectors available please contact SSC
 *** Other power options available please contact SSC

** Other AFC options available please contact SSC
 **** Other ranges available please contact SSC



Satellite Systems Corporation
 101 Malibu Drive Virginia Beach, VA 23452 USA
 Voice (757) 463-3553 FAX (757) 463-3891
info@satsyscorp.com

Model 3434-IF

L-Band Beacon Tracking Receiver

Version 4

Sweep Widths for Accu-trac signal tracking feature for high drift frequency applications.
Accu-trac features can be selected from the front panel or via remote mode. Disabled or active selected by user.

Disabled	±50 kHz	±75 kHz	±100 kHz	±150 kHz	±200 kHz	±250 kHz
±300 kHz	±400 kHz	±500 kHz	±600 kHz	±700 kHz	±800 kHz	

Valid Options

AFC and Filtering

- 0 Standard AFC and Standard 0.4 Hz output smoothing filter
- A No AFC – Use for tracking Wide Data Carriers. Standard 0.4 Hz output smoothing filter
- S No AFC and No 0.4 Hz output smoothing filter.
- T No 0.4 Hz output smoothing filter. Standard AFC

Bandwidth

- 0 50 kHz pre-detection bandwidth
- 5 25 kHz pre-detection bandwidth

Input Connector on Rear of BTR

- N 50 ohm N female connector
- B 50 ohm BNC female connector
- Q 50 ohm TNC female connector
- S 50 ohm SMA female connector

Options

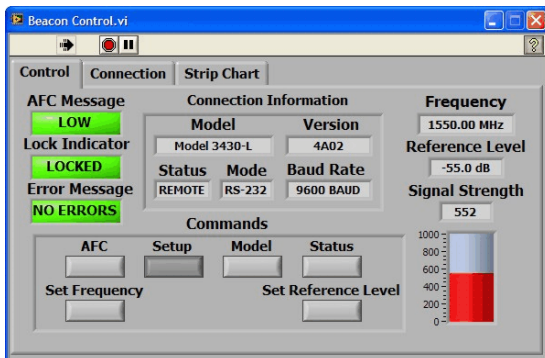
- Blank No CDS
- C Optional Continuous Data Streaming

Part Numbering Typical part number 3434-IF00BC

Frequency Range	Base Model	BAND	AFC & Filtering	Band-width	Input Connector	M&C
50 to 200 MHz	3434	IF	0, A, S, or T	0 or 5	N, B, Q, or S	Blank or - C

Other Frequency Ranges are available.
 Please see <http://www.satsyscorp.com> for more information.

User interface example



Satellite Systems Corporation 101 Malibu Drive, Virginia Beach, Virginia 23452 USA
 757.463.3553 Phone 757.463.3891 Fax www.satsyscorp.com info@satsyscorp.com